



Making PSIP Work for You

Gomer Thomas
Triveni Digital, Inc



Who is Triveni Digital?

Supplier of solutions to DTV broadcasters

- GuideBuilder™ PSIP generators
- StreamScope™ stream analyzers
- SkyScraper™ data broadcast systems
 - general purpose datacasting
 - interactive TV content insertion
- StreamBridge™ PSIP translators
- StreamDoctor™ diagnostic service
- Custom Solutions group for special projects

LVCC booth 3349 at NAB2001, South Hall 2



Outline

- PSIP in a Nutshell
- ATSC Transport Stream Structure
- MPEG-2 PSI tables
- ATSC PSIP tables
- PSIP Implementation Issues

PSIP in a Nutshell



- Program and System Information Protocol
- Metadata inserted into broadcast stream
- Enables:
 - Tuning to virtual channels
 - Displaying channel name (on channel changes)
 - Interactive electronic program guides (EPGs)
 - Automatic language selection for audio track
 - "V-Chip" function (parental content blocking)
 - Accurate receiver time-of-day clock setting

ATSC Broadcast Stream



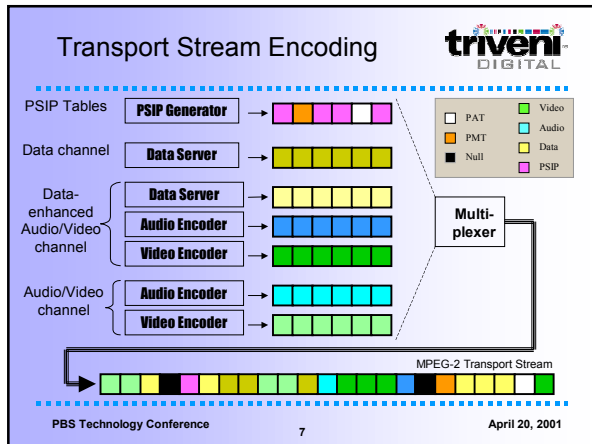
- May contain multiple **virtual channels**:
 - Video channels, each with a video stream, one or more audio streams, and possibly one or more data streams.
 - Audio channels, each with one or more audio streams and possibly one or more data streams.
 - Data-only channels, each with one or more data streams.
- Based on **MPEG-2 transport stream**

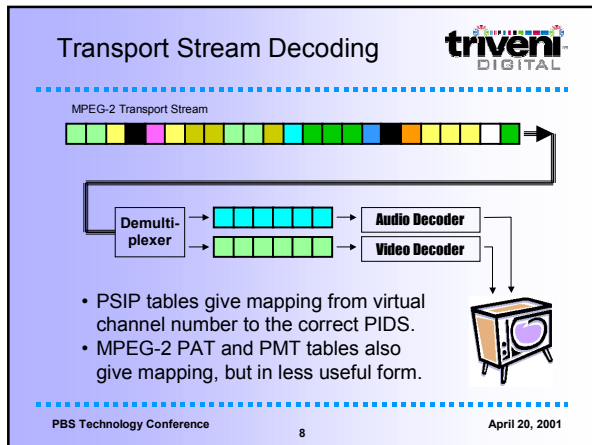
MPEG-2 Transport Stream



- Consists of 188-byte **transport packets**; 4 byte header, 184 byte payload in each
- Conveys interleaved **elementary streams** -- audio, video, data, PSI, ...
- Elementary stream to which each packet belongs is identified by **packet id (PID)** in packet header.



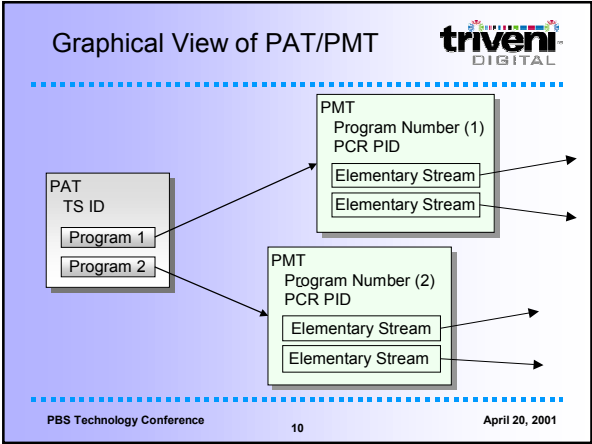




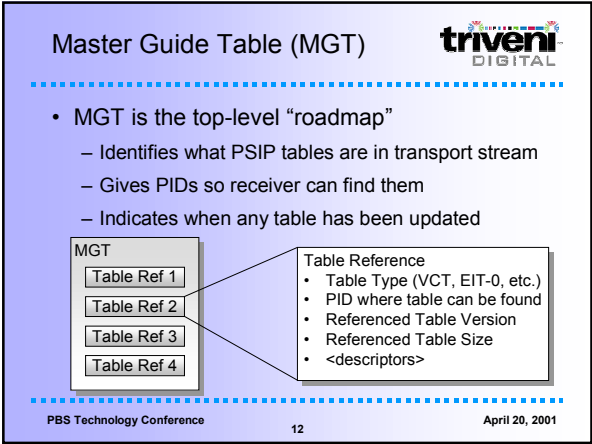
MPEG-2 Program Specific Information (PSI)

- Gives very basic tuning information:
 - PAT (Program Association Table: one for entire transport stream; identifies “programs” (virtual channels) in stream and gives PIDs for PMTs.
 - PMT (Program Map Table): one per “program”; identifies elementary streams in “program” and gives their types (audio, video, etc.) and PIDs.
- Supports tuning by physical channel number and MPEG-2 program number.

PBS Technology Conference 9 April 20, 2001



- ### ATSC PSIP Tables
- Master Guide Table (MGT)
 - System Time Table (STT)
 - Virtual Channel Table (VCT)
 - Rating Region Table (RRT)
 - Event Information Table (EIT)
 - Extended Text Table (ETT)
 - Directed Channel Change Table (DCCT)
 - DCC Selection Code Table (DCCSDT)
- PBS Technology Conference 11 April 20, 2001

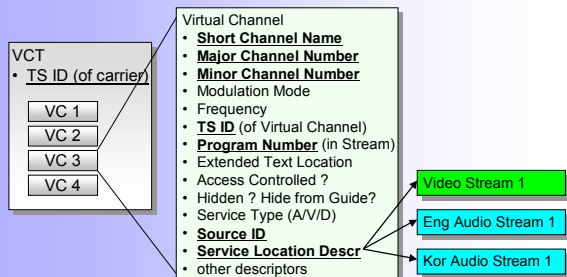


Virtual Channel Table (VCT)



- Has same info as PAT & PMTs, plus more.
- Allows tuning by virtual major-minor channel number, rather than physical channel number and MPEG-2 “program” number.
- Allows language track selection.
- Allows channel name to be displayed on channel changes and in EPG.
- ATSC receivers are designed to use VCT; may have trouble with PAT and PMTs alone.

Virtual Channel Table (VCT)



Event Info Tables (EITs) Extended Text Tables (ETTs)



- Support on-screen program info displays
 - At every channel change, and on request
 - Program title, start time, end time, content advisory rating, closed caption indicator
 - Extended descriptive information on request
 - No PSIP data → lost chance to retain viewers
- Support on-screen interactive EPG (Electronic Program Guide)

Electronic Program Guide



- Guides viewers to programs/channels
- No PSIP data → lost chance to attract viewers



PBS Technology Conference

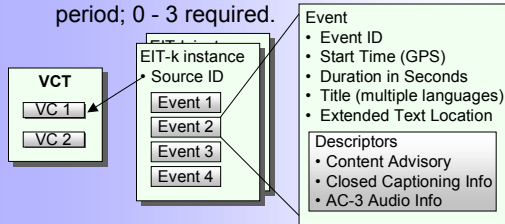
16

April 20, 2001

Event Information Tables (EITs)



- Describe “events” (TV programs).
- EIT-0 through EIT-127; each covers 3 hour period; 0 - 3 required.



PBS Technology Conference

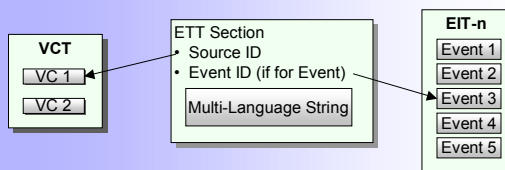
17

April 20, 2001

Extended Text Tables (ETTs)



- Text descriptions for channels and events
- May be in multiple languages
- May use Huffman coding to reduce bandwidth



PBS Technology Conference

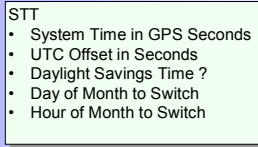
18

April 20, 2001

System Time Table (STT)



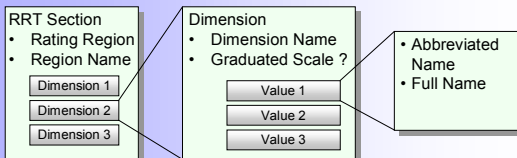
- Gives Clock Time
 - Gives the current GPS time
 - Gives daylight savings time indicators



Rating Region Table (RRT)



- Defines content advisory system(s) in use
 - Defines rating scheme(s) for rating region(s) (MPAA and TV Parental Guidelines in USA)
 - Ratings are referenced by Content Advisory Descriptors in EITs

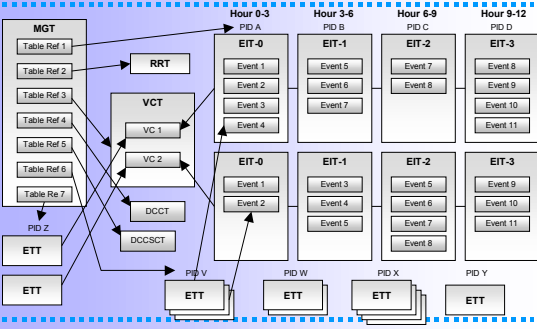


Directed Channel Change Tables (DCCT, DCCSCT)



- Directed Channel Change Table (DCCT)
 - Instructs receiver to change channels, based on viewer preferences, demographics, location, etc.
 - Usually used to change channels within transport stream, e.g., multiple regional news broadcasts
- DCC Selection Code Table (DCCSCT)
 - Provides classification scheme used for viewer to express preferences during TV receiver setup
- Especially useful on channel lineup changes (e.g., between 4 SD and 1 HD channel).

PSIP Tables: The Big Picture



PSIP Implementation Issues



- Basic requirements:
 - Gather the correct information
 - Get table formats and timing correct
 - Insert information into broadcast
- Must fit into station environment
- Must evolve with station

Gathering the Information



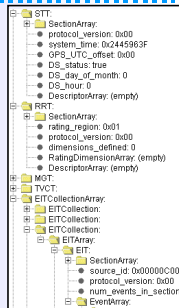
- Manual entry/editing:
 - User context, user terminology (hides complexity; prevents inconsistency)
 - Remote UIs for different departments
 - Convenient operations for last minute updates
- Automated interfaces:
 - Subscription to listing service
 - Interface to traffic system
 - Interface to automation system

Manual User Interface: Hiding Complexity



User Interface

Start Time	Duration	End Time	Event Name	
04:00	1:20	06:00	Wyatt Earp	The portrait has defending boos
06:00	35	06:35	News	
06:35	30	07:05	George Michael Sports Machine	
07:05	60	08:05	Dateline NBC	Stipulations of
08:05	60	09:05	Meet the Press	RYOnline in Youg Podests, VtWab
08:05	55	10:00	Kickin' It	
10:00	30	10:30	Endless Youth	
10:30	30	11:00	Game Warden Wildlife Journal	RYBison, Wrease



PBS Technology Conference

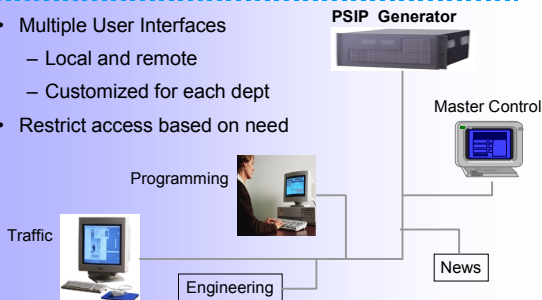
25

April 20, 2001

Remote User Interface Considerations



- Multiple User Interfaces
 - Local and remote
 - Customized for each dept
- Restrict access based on need



PBS Technology Conference

26

April 20, 2001

Automated Interfaces



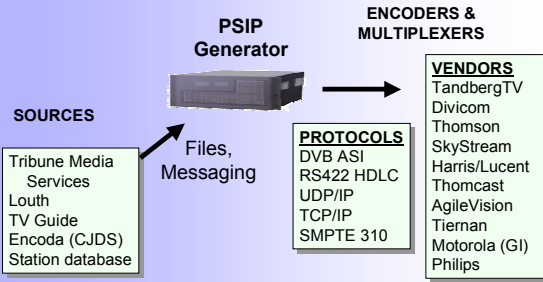
- Listing service
 - + Leverages existing input to listing service
 - + Leverages listing service program info database
 - Subscription cost (but less than manual entry)
- Traffic system
 - + Leverages existing information in traffic system
- Automation system
 - + Catches last minute programming changes
 - + Ensures precise timing of changes to VCT

PBS Technology Conference

27

April 20, 2001

Inserting PSIP into Broadcast

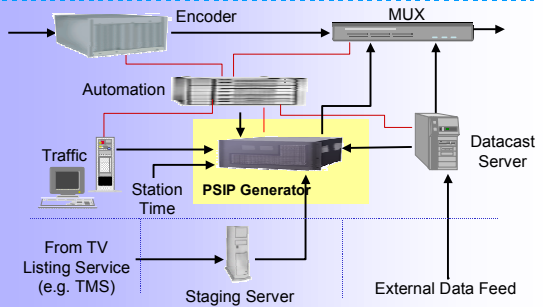


PBS Technology Conference

28

April 20, 2001

Fitting into Station Environment



PBS Technology Conference

29

April 20, 2001

Evolving with Station



- Interoperable with diverse data sources
- Able to merge data from multiple sources
- Interoperable with diverse encoders/muxes
- Fault tolerant: 24 hours/day, 7 days/week
- Will support future PSIP extensions

PBS Technology Conference

30

April 20, 2001

Summary



- PSIP is important
 - Provides tuning info needed by receivers
 - Supports EPG to attract viewers to channel(s)
 - Enables "V-chip" (content advisory) controls
 - Enables language selection for audio track
 - Maintains correct time in DTV receiver
- PSIP generation system must be:
 - Easy to use
 - Highly automated to minimize staffing costs
 - Fully integrated into station environment

QUESTIONS?

THANKS!

Gomer Thomas
Triveni Digital, Inc.
phone: 609.716.3513
fax: 609.716.3503
email: gomer@trivenidigital.com
web: www.trivenidigital.com

LVCC booth 3349 at NAB2001, South Hall 2
